

NEW

Pushbutton Switches A22N/A30N-series

Compact, Easy to Use, Safe, Global
Best Style Onsite.

plus
Value +



    
IP66, NEMA13

realizing



Pushbutton Switches
A22NN/A22NL



Selector Switches
A22NS/A22NW



Key-type Selector Switches
A22NK



Indicators
M22N

Space Savings, Easy Maintenance, and Safe Operation



Short Body

Reduce panel size and thickness with a short body even for multiple contact points.

30% shorter than previous models



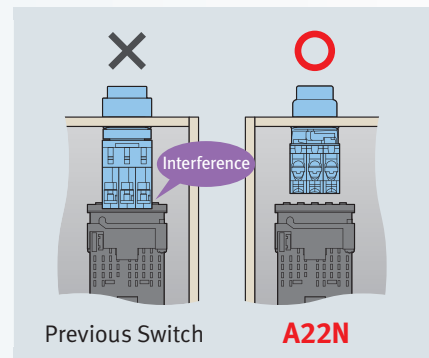
Stage 1
45.3mm

Stage 2
66.8mm

Previous Switch
One stage
(maximum)
64mm

Short body even
when expanded
to 2 stages.

Prevents interference with other components even when increasing the number of circuits.



Previous Switch

A22N

Short Body Even When Increasing the Number of Contact Points

Same depth when mounting three Contact Blocks* in a series. And the Contact Blocks come in universal colors.

*For non-lighted models.
Two contact points maximum
for lighted models.



Short Body Even for 30-mm Switches

Reduce the size of your power panels.





— New-concept Switches to Help You Provide Increased Added Value.



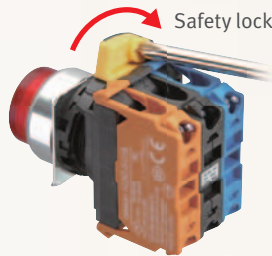
Easy Installation

Many innovations make installation work a breeze.

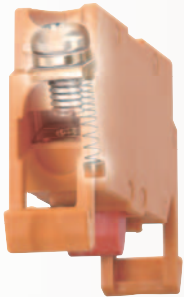
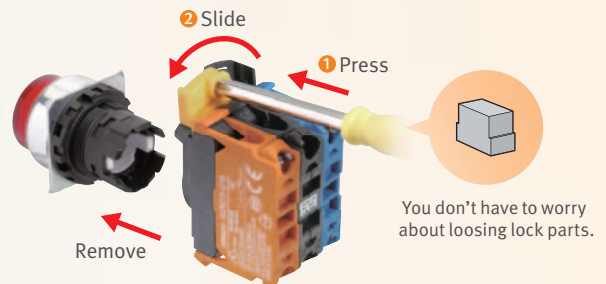
Safely Locked by **Sliding One Piece**

Only one step is required for a safety lock. Only two steps to complete installation.

Attachment



Removal



Easy Wiring

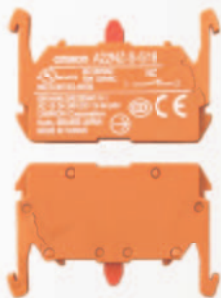
A hold-on structure prevents screws from falling (floating).



Easy Re-tightening

You can re-tighten the stage-1 Contact Block screws without removing the stage-2 Contact Block.

Left-right symmetric Contact Blocks



The Contact Blocks are symmetric left to right, for easy installation.

Safety Measure

Finger Protection

The structure prevents you from touching screws directly for greater safety.



		Bezel	Button	Flat	Projected	Full-guard	Mushroom
A22N	Plastic						
	Brushed metal						
	Metal					—	
A30N	Brushed metal						

Pushbutton color	Non-lighted Switches	Opaque	Red	Green	Yellow	White	Blue	Black	Orange	Opaque white
		Transparent								
		When not lit								
		When lit								

New Value for Control Panels

OMRON offers products and services to solve your diverse control panel challenges and contributes to growing your business.

Value^{plus}+

OMRON Corporation Industrial Automation Company
Tokyo, JAPAN

Contact: www.ia.omron.com

Regional Headquarters

OMRON EUROPE B.V.
Wegalaan 67-69-2132 JD Hoofddorp
The Netherlands
Tel: (31)2356-81-300/Fax: (31)2356-81-388

OMRON ASIA PACIFIC PTE. LTD.

No. 438A Alexandra Road # 05-05/08 (Lobby 2),
Alexandra Technopark,
Singapore 119967
Tel: (65) 6835-3011/Fax: (65) 6835-2711

OMRON ELECTRONICS LLC

2895 Greenspoint Parkway, Suite 200
Hoffman Estates, IL60169 USA
Tel: (1) 847-843-7900/Fax: (1) 847-843-7787

OMRON (CHINA) CO., LTD.

Room 2211, Bank of China Tower,
200 Yin Cheng Zhong Road,
PuDong New Area, Shanghai, 200120, China
Tel: (86) 21-5037-2222/Fax: (86) 21-5037-2200

Authorized Distributor:

© OMRON Corporation 2015 All Rights Reserved.
In the interest of product improvement,
specifications are subject to change without notice.

Cat. No. A247-E1-02

0515(0415)